



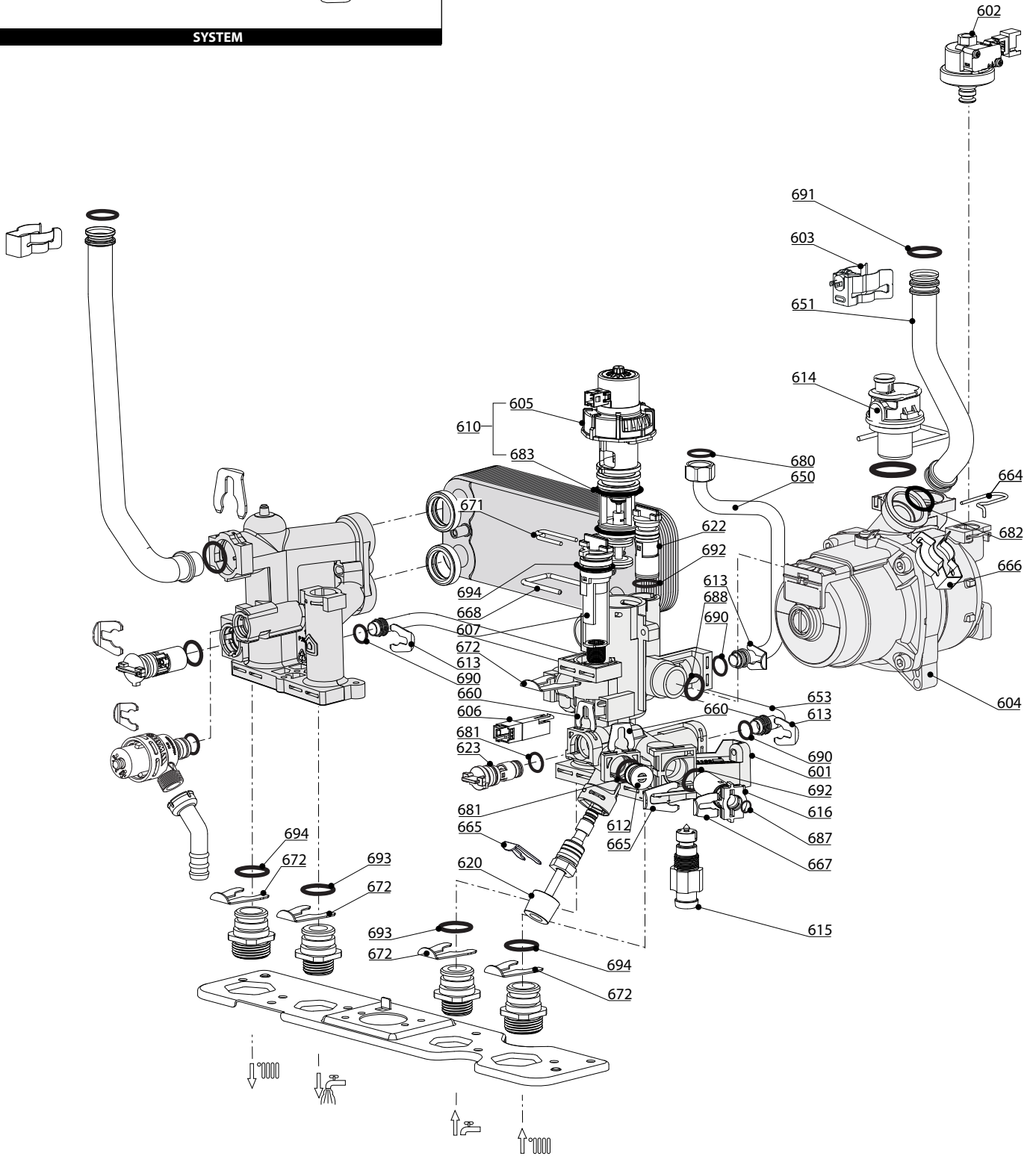
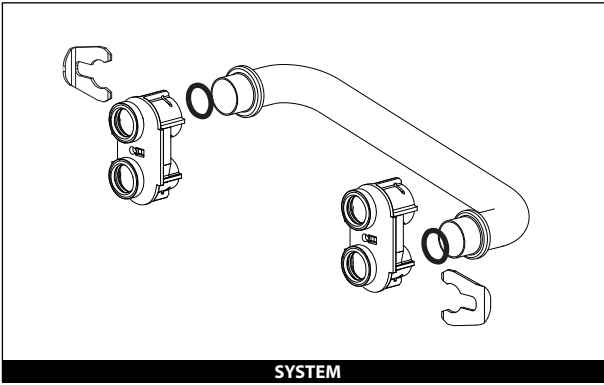
SPARE PARTS EXPLODED VIEW
GAS-WALL CONDENSING BOILERS
Model
CLAS ONE

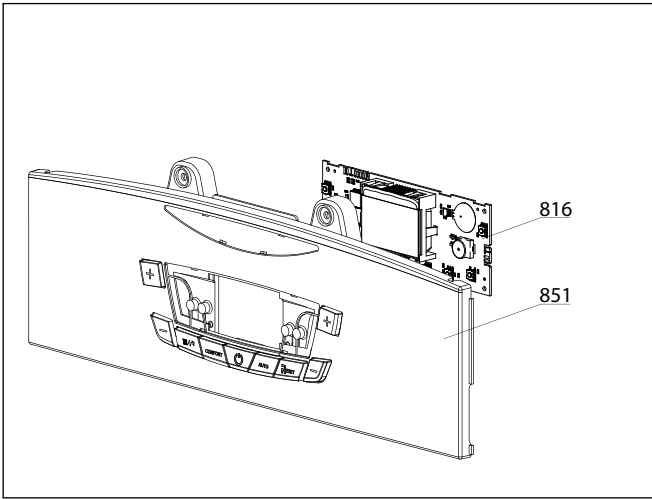
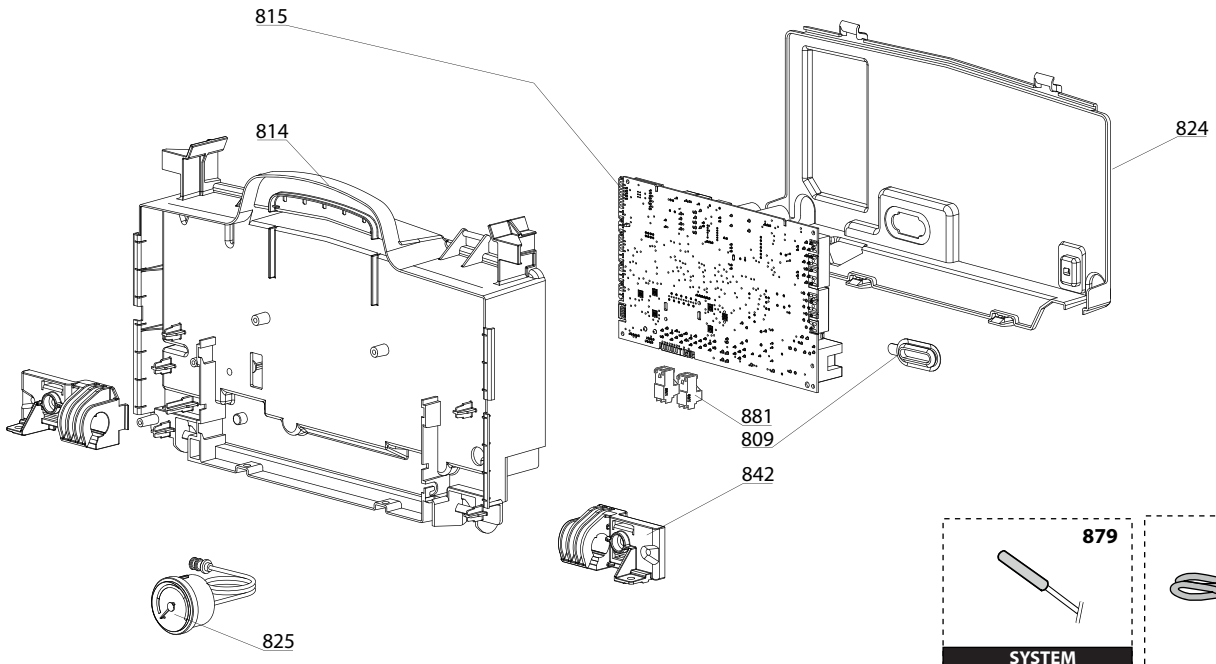
R8203482-03 - 14/06/2018

CLAS ONE

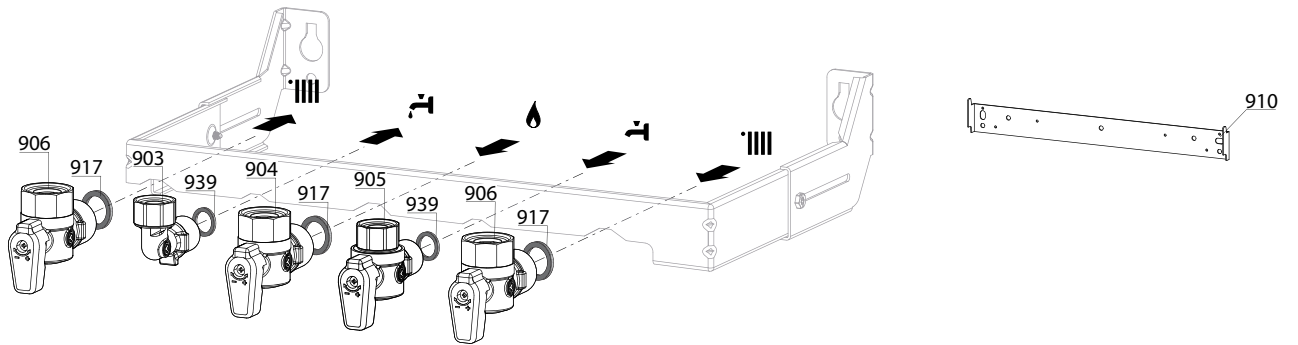
Gas-wall condensing boilers

1	3301017	CLAS ONE 24 RDC	07-2017	-
2	3301036	CLAS ONE 30 RDC	07-2017	-
3	3301037	CLAS ONE 35 RDC	07-2017	-
4	3301038	CLAS ONE SYSTEM 18 RDC	07-2017	04-2018
5	3301039	CLAS ONE SYSTEM 24 RDC	07-2017	-
6	3301040	CLAS ONE SYSTEM 30 RDC	02-2017	-
7	3301041	CLAS ONE SYSTEM 35 RDC	07-2017	-
Col	Reference	Model type	Begin	End

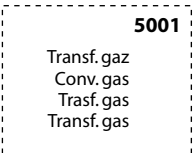




900



5000



LIST OF THE ABBREVIATIONS

HW	: Hot water.
CW	: Cold water.
C	: Ceramic resistance (normal heating).
Ca	: Ceramic resistance (accelerated heating)
TP	: Immersion heater.
1F	: With fittings.
2F	: Without fittings.
3F	: With fittings and another outlet connection.
AMI	: With mixing valve.
SMI	: Without mixing valve.
PUISS	: Power of th appliance.
PN	: Appliance with normal pression.
LP	: Appliance with low pression.
PV	: Appliance with variable power.
PF	: Appliance with fixed power.

IDENTIFICATION PLATE

SERIAL NUMBER

10 Characters :	04 05 125 011	Sequential number Manufacturing day Year of manufacture
11 Characters :	1 95 065004 - 31	Technical number of the appliance Sequential number Year of manufacture
Month of manufacture : from 1 to 9 → Jan. to Sep., O → Oct., N → Nov., D → Dec.		
19 Characters :	08 05 0013199 900640031	Product reference Sequential number
Year of manufacture Month of manufacture		
20 Characters :	3675007 XX 2 07 070 00315	Sequential number Manufacturing day Year of manufacture
Product reference Millenium of manufacture		
21 Characters :	3675007 XX 07 070 0000315	Sequential number Manufacturing day
Product reference Year of manufacture		