



ARISTON

SPARE PARTS EXPLODED VIEW GAS-WALL BOILER ATM. BURNER

Model

CLAS X

R8203475-02 - 18/10/2016

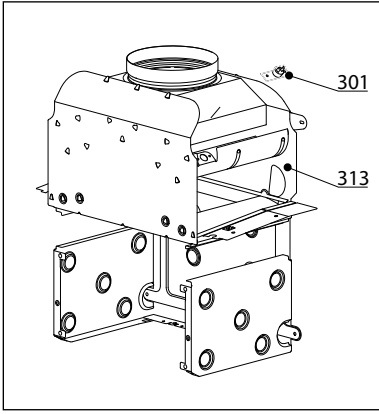
CLAS X

Gas-wall boiler atm. burner

1	3300866	CLAS X 24 CF NG
2	3300864	CLAS X 24 FF NG
3	3300865	CLAS X 28 FF NG
4	3300867	CLAS X SYSTEM 24 CF NG
5	3300868	CLAS X SYSTEM 28 CF NG
6	3300869	CLAS X SYSTEM 24 FF NG
7	3300870	CLAS X SYSTEM 28 FF NG
8	3300871	CLAS X SYSTEM 32 FF NG

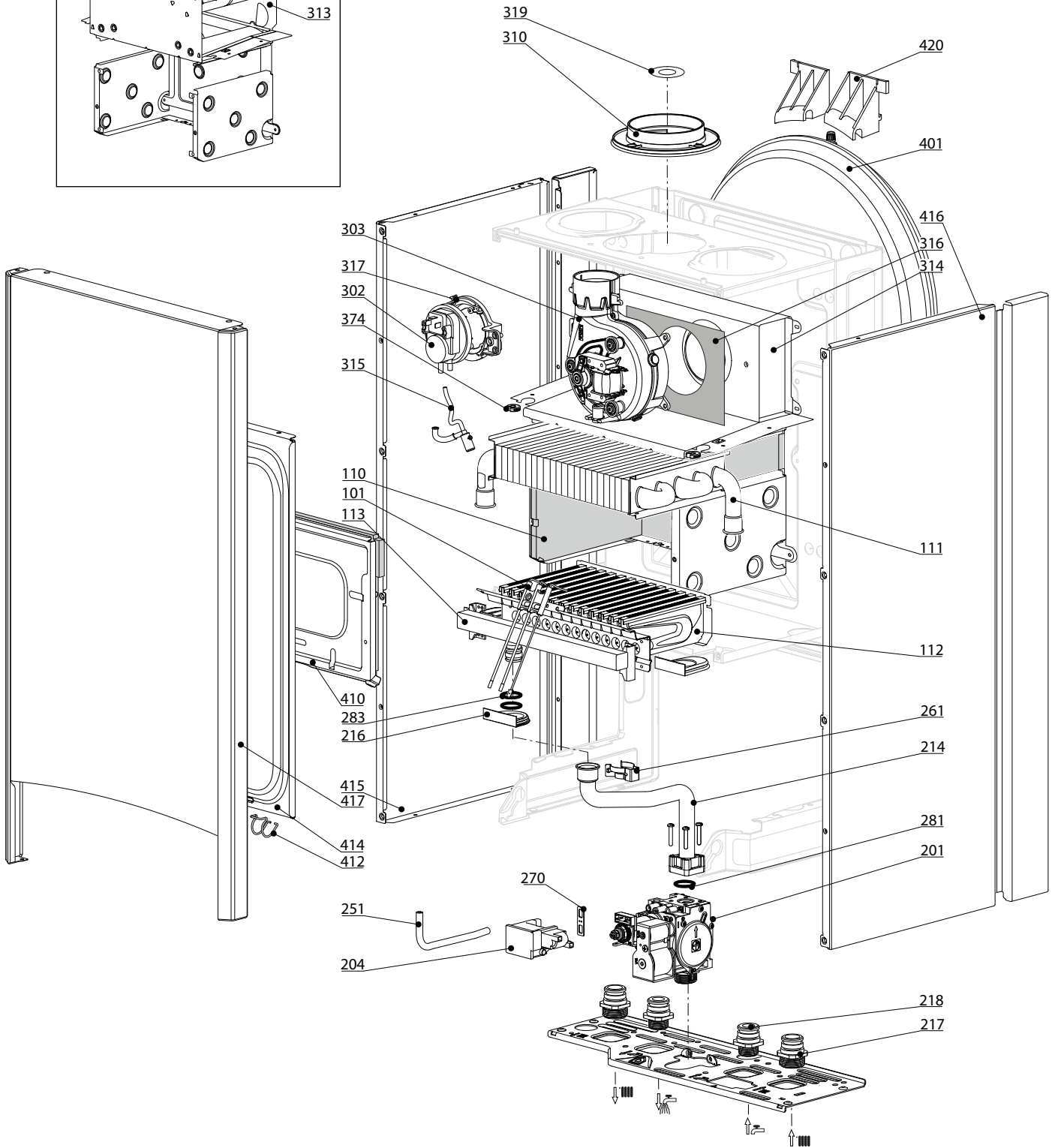
Col	Reference	Model type	Begin	End
-----	-----------	------------	-------	-----

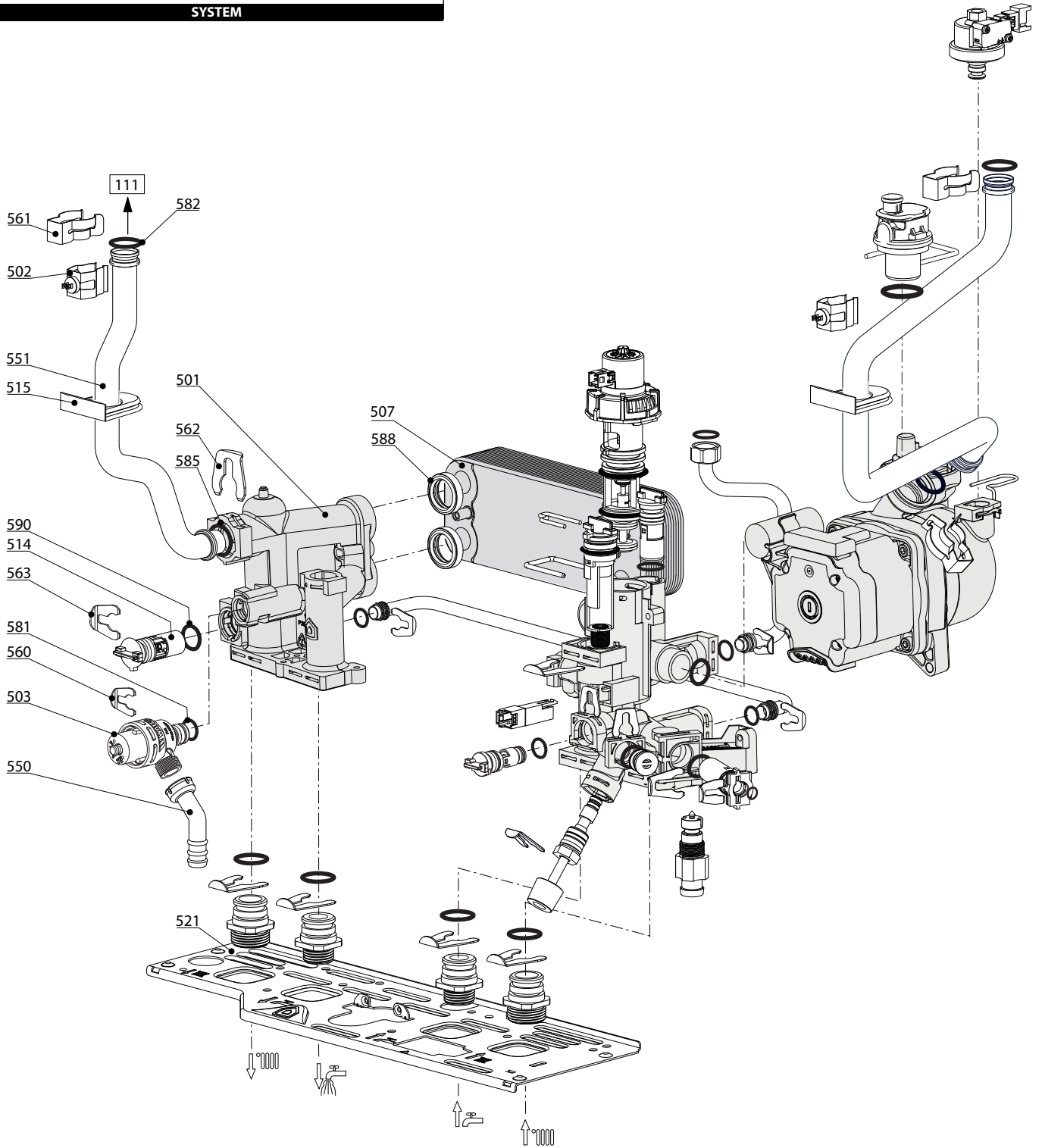
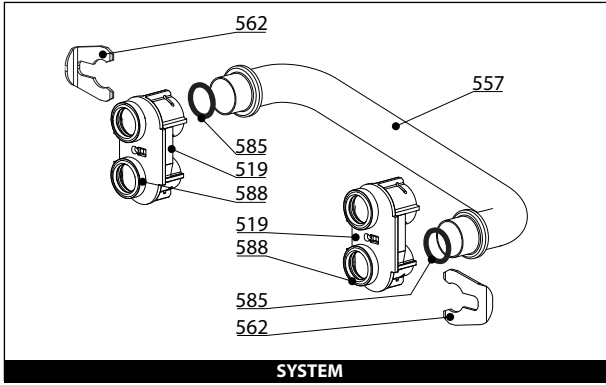
100
200
300
400

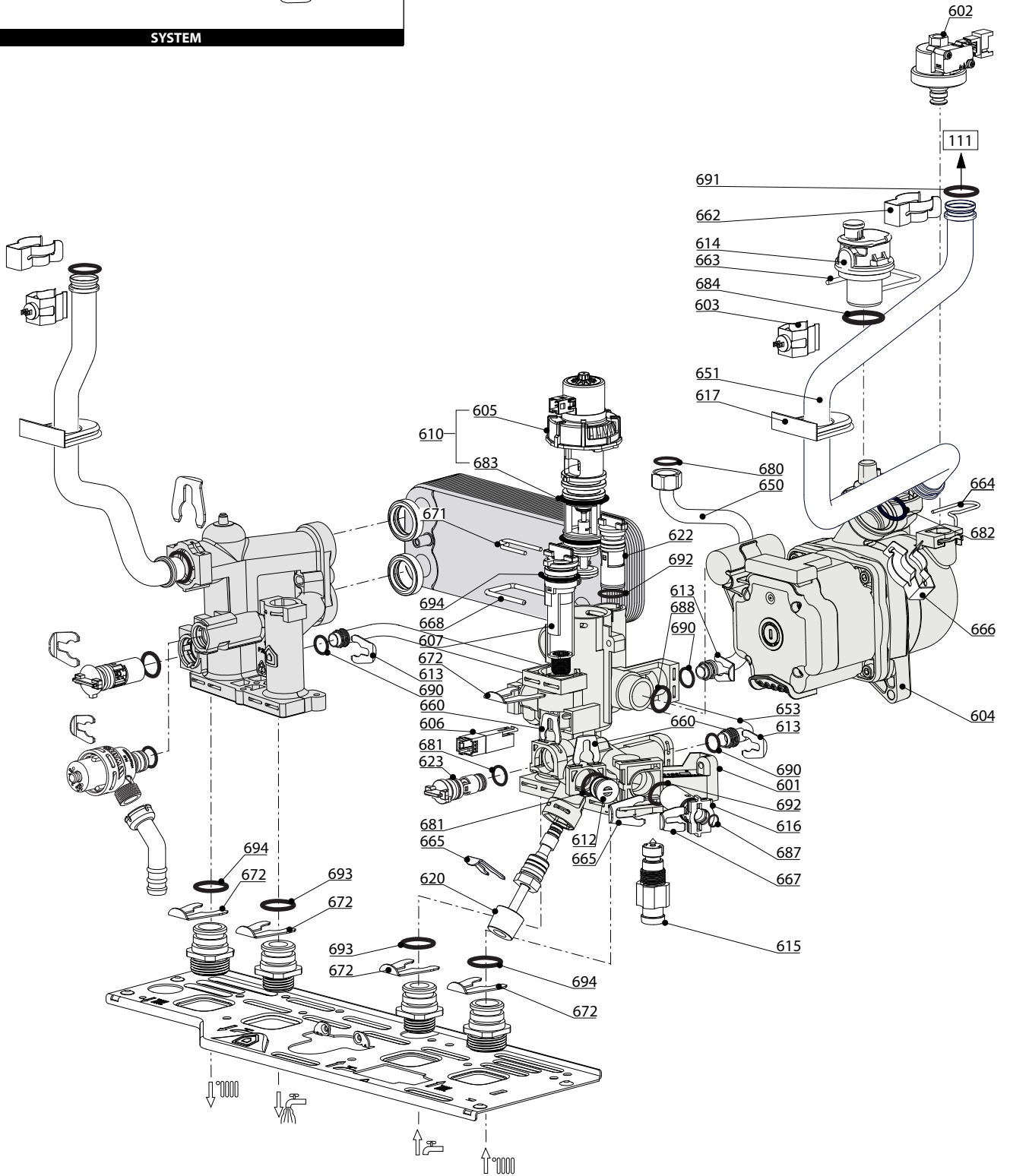
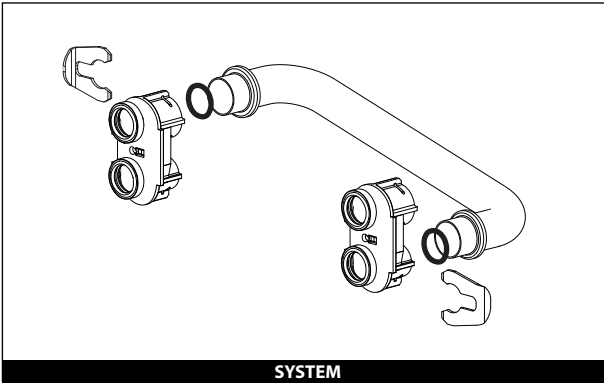


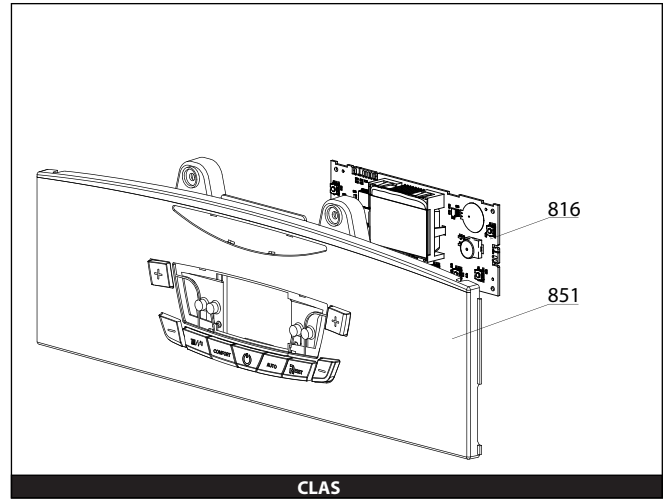
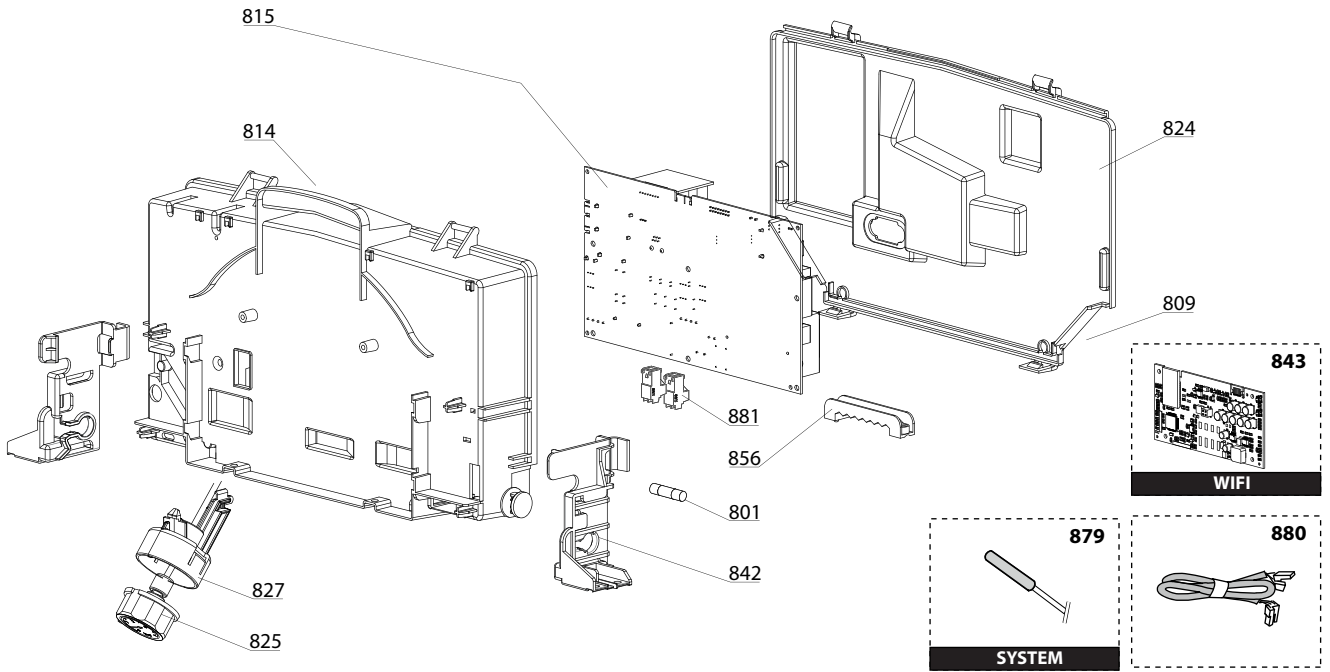
CLAS X

Gas-wall boiler atm. burner

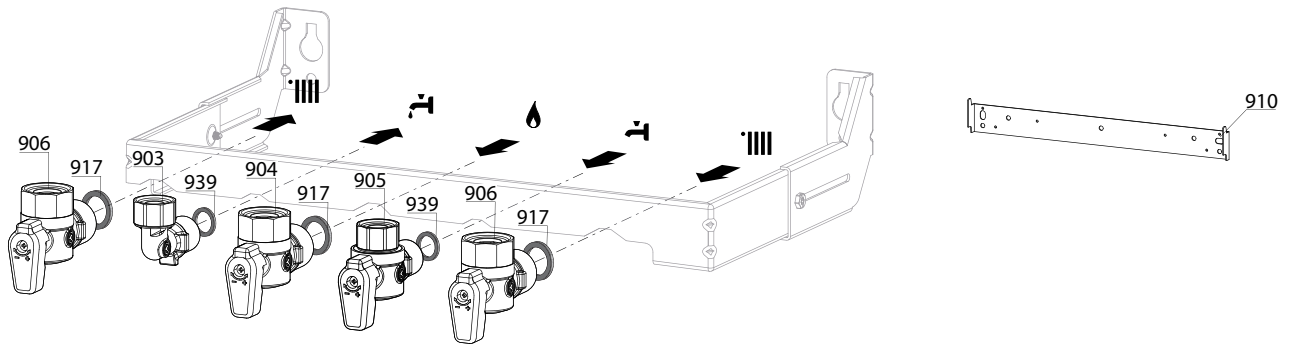








900



5000

5001
 Transf. gaz
 Conv. gas > **G31**
 (LPG - GPL)
 Trsf. gas
 Transf. gas

5002
 Transf. gaz
 Conv. gas > **G20**
 (NAT - MET)
 Trsf. gas
 Transf. gas

5020
 Options
 Accessories
 Opzioni
 Accessorio

☉⇒	Description	Manf. Pt. N	Type	<div style="display: flex; justify-content: space-between; font-size: small;"> CLAS X 24 CF CLAS X 24 FF CLAS X 28 FF CLAS X SYSTEM 24 CF CLAS X SYSTEM 28 CF CLAS X SYSTEM 24 FF CLAS X SYSTEM 28 FF </div>																		From	to
				1	2	3	4	5	6	7	8	9	10	11	12	13	14	15	16	17	18		
0800	ELECTRICAL BOX																						
0809	GROMMET (REGULATION ACCESS)	998382		•	•	•	•	•	•	•	•	•	•	•	•	•	•	•	•				
0814	CONTROL PANEL	65115784		•	•	•	•	•	•	•	•	•	•	•	•	•	•	•	•				
0815	P.C.B. (MAIN)	65115783		•	•	•	•	•	•	•	•	•	•	•	•	•	•	•	•				
0816	P.C.B. (DISPLAY)	65115776		•	•	•	•	•	•	•	•	•	•	•	•	•	•	•	•				
0824	CONTROL PANEL COVER (REAR)	65115785		•	•	•	•	•	•	•	•	•	•	•	•	•	•	•	•				
0825	PRESSURE GAUGE	65114200		•	•	•	•	•	•	•	•	•	•	•	•	•	•	•	•				
0827	SUPPORT (PRESSURE GAUGE)	65115809		•	•	•	•	•	•	•	•	•	•	•	•	•	•	•	•				
0842	SIDE COVER SUPPORT	65115811		•	•	•	•	•	•	•	•	•	•	•	•	•	•	•	•				
0851	FRONT CONTROL PANEL COMPLETE	65115774								•													
	FRONT CONTROL PANEL COMPLETE	65115775		•	•	•	•	•	•	•	•	•	•	•	•	•	•	•	•				
0856	CABLE CLAMP	65103377		•	•	•	•	•	•	•	•	•	•	•	•	•	•	•	•				
0879	BOILER THERMISTOR TEMP. SENSOR	60000454								•	•	•	•	•	•	•	•	•					
0880	3-WAY VALVE CABLE	65115790		•	•	•																	
	CABLE (IONIZATION ELECTRODE)	60001883		•	•	•	•	•	•	•	•	•	•	•	•	•	•	•	•				
	DISPLAY WIRING - 5 WIRES BLUES	60000746		•	•	•	•	•	•	•	•	•	•	•	•	•	•	•	•				
	EARTH WIRE	65104286		•	•	•	•	•	•	•	•	•	•	•	•	•	•	•	•				
	FAN CABLE	60001902					•	•															
	FEEDER 240V	60001619		•	•	•	•	•	•	•	•	•	•	•	•	•	•	•	•				
	NTC - PRES SWITCH CABLE	65115787					•	•															
	NTC - PRES SWITCH CABLE	65115789		•			•	•															
	PUMP 2V CABLE 5M WILO	65104520	WILO	•	•	•	•	•	•	•	•	•	•	•	•	•	•	•	•				
	THREE WAY VALVE CABLE	65115937					•	•	•	•	•	•	•	•	•	•	•	•	•				
0881	CONNECTOR 2P	65111933		•	•	•	•	•	•	•	•	•	•	•	•	•	•	•	•				
	CONNECTOR 3P (x5)	65111934-01		•	•	•	•	•	•	•	•	•	•	•	•	•	•	•	•				
0900	JIG PLATE & PIPE FITTING																						
0903	HOT WATER CONNECTION	60000891		•	•	•	•	•	•	•	•	•	•	•	•	•	•	•	•				
0904	GAS SERVICE TAP	60000898		•	•	•	•	•	•	•	•	•	•	•	•	•	•	•	•				
0905	COLD WATER TAP	60000894		•	•	•	•	•	•	•	•	•	•	•	•	•	•	•	•				
0906	WATER FLOW & RETURN SERVI. TAP	60000885		•	•	•	•	•	•	•	•	•	•	•	•	•	•	•	•				
0910	WALL HOOK	60000625		•	•	•	•	•	•	•	•	•	•	•	•	•	•	•	•				
0917	SHEET GASKET D: 24-17-1.5	60061855-19		•	•	•	•	•	•	•	•	•	•	•	•	•	•	•	•				
0939	SHEET GASKET D: 16.5-11-1.5	60061854-14		•	•	•	•	•	•	•	•	•	•	•	•	•	•	•	•				

LIST OF THE ABBREVIATIONS

HW	: Hot water.
CW	: Cold water.
C	: Ceramic resistance (normal heating).
Ca	: Ceramic resistance (accelerated heating)
TP	: Immersion heater.
1F	: With fittings.
2F	: Without fittings.
3F	: With fittings and another outlet connection.
AMI	: With mixing valve.
SMI	: Without mixing valve.
PUISS	: Power of th appliance.
PN	: Appliance with normal pression.
LP	: Appliance with low pression.
PV	: Appliance with variable power.
PF	: Appliance with fixed power.

IDENTIFICATION PLATE

SERIAL NUMBER

10 Characters :	04 05 125 011	Sequential number Manufacturing day Year of manufacture
11 Characters :	1 95 065004 - 31	Technical number of the appliance Sequential number Year of manufacture
Month of manufacture : from 1 to 9 → Jan. to Sep., O → Oct., N → Nov., D → Dec.		
19 Characters :	08 05 0013199 900640031	Product reference Sequential number
Year of manufacture Month of manufacture		
20 Characters :	3675007 XX 2 07 070 00315	Sequential number Manufacturing day Year of manufacture
Product reference Millenium of manufacture		
21 Characters :	3675007 XX 07 070 0000315	Sequential number Manufacturing day
Product reference Year of manufacture		